

Public & Community Engagement (PCE) Development Funding 2021/22 Call

1. Context

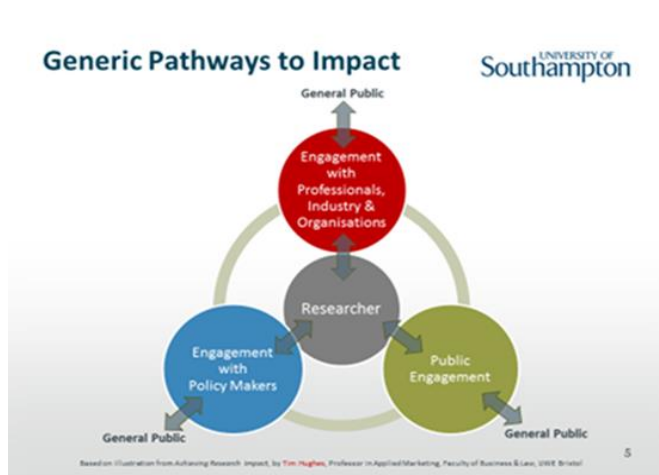
The [Public Engagement with Research unit](#) invites applications for funding to develop and run Public & Community Engagement activities during the 2021/22 academic year.

The call is framed by this definition:

“Public engagement describes the myriad of ways in which the activity and benefits of higher education and research can be shared with the public. Engagement is by definition a two-way process, involving interaction and listening, with the goal of generating mutual benefit.” (NCCPE)

This graphic may help you place your proposal within the wider research process; this Call will support projects whose emphasis lies in the bottom right circle.

For information on the wider context, see the [UKRI](#) and [National Co-ordinating Centre for Public Engagement](#) websites.



Our seed-funding has supported numerous engagement projects over the years, many of which have thrived and grown beyond the funding period to attract other funding, develop partnerships and take up new and exciting directions. A significant number have contributed to REF 2020 impact case studies.

Right-click the image and open hyperlink to find out more.

2. Call Strands

This year's Call comprises three Activity Strands:

Strand 1 – Civic University: Co-creation/co-production with local partners

Strand 2 – UKRI priority: Developing 'citizen science' engagement approaches

Strand 3 – Reflective practice for Public and Community Engagement (PCE)

3. Call Criteria

Proposals within **all** Strands should:

- Demonstrate ability to **stimulate interest, excitement and debate** about an area of research/innovation/teaching/collaboration.
- Define a **clear purpose and audience** for the engagement.
- Be seeking **mutual benefit(s)** for those involved.
- Include a **considered plan for evaluating** the project's effectiveness.
- Apply **ED&I principles** to value difference, embed inclusivity and combat inequalities/prejudice throughout the work.
- Support **learning and development** within the project team, with consideration of how this will be captured and shared with others.
- Ideally bring some form of **additional in-kind resource or matched funding** to the project.

3.1 Strand 1 Civic University* Co-creation/co-production with local partners

Proposals should:

- Focus on engaging a community or place within the City of Southampton and/or Eastleigh, Test Valley, Winchester.
- Involve the active participation of a local partner/s in co-design/co-creation and co-production of the project.
- Be working to identify and address a local need or needs.

Proposals may be geared to an area of research, innovation or teaching & learning (and may contain elements of each).

The project Lead may be an individual external to the University (i.e. from the partnering organisation/group). For administrative purposes, an internal co-lead and budget-holder must be identified in the application.

Proposals focussing on an aspect of Covid-19 recovery (economic, social, cultural) and/or topics aligning with one of our [Public Engagement Hubs](#) (Health & Wellbeing/Nature & Biodiversity) or [Schools Partnership](#) work are particularly welcome.

*Find out more: [Civic University](#) [UoS press announcement Nov 2020](#)

3.2 Strand 2 UKRI priority: Developing 'citizen science'* engagement approaches

Proposals should:

- Be mindful of and informed by the European Citizen Science Association (ECSA) [Principles](#) and [Characteristics](#) of Citizen Science.
- Involve 'citizens' as contributors/collaborators, with a meaningful role in the project, potentially across multiple stages.
- Identify a genuine 'science' desired outcome, e.g. answering a research question or informing action/decisions/policy.
- Demonstrate potential to increase (UoS) institutional capacity for citizen science approaches (e.g. shared learning during/beyond project).

*broad definition spanning all disciplines (natural/physical/social sciences and arts/humanities)

Proposals may focus on 'pilot' activity to test a methodology/approach; alternatively they may seek to build on and develop existing work. The potential for activities/outputs to feature within e.g. [Human Worlds \(Arts/Humanities\) Festival](#), [ESRC Festival of Social Sciences](#), or [Science/Engineering Festival](#) should also be considered.

3.3 Strand 3 Reflective practice for PCE

Proposals should:

- Explore and develop an engagement approach which is intentionally reflective.
- Demonstrate how the reflective process will be supported throughout the project.

3.4 Additional considerations:

All applicants are encouraged to consider:

- The potential **sustainability**, where relevant, of the activity beyond the initial period of funding.
- Suitability of the proposal to **connect or integrate with Faculty or University strategic initiatives**, for example:
 - [Arts & Culture](#) - collaborative opportunities with UoS arts venues – contact L.C.Coysh@soton.ac.uk
 - **Strategic Partnership with Winchester Science Centre** – contact peru@soton.ac.uk
 - [Public engagement platforms](#)

International engagement is within scope and the International Office may be able to advise/support – contact peru@soton.ac.uk in first instance for advice.

NB: we will not fund proposals that are primarily focussed on marketing and dissemination activities.

See also our [Planning and Evaluating Public Engagement support pages](#).

4. Funding and scope

Previous awards have ranged between £500 and £4000. For an overview of previously funded projects see [19/20 projects](#); [2020/21 projects](#); and our [case studies](#).

We expect to fund a mix of lower cost (exploratory) proposals, and some larger projects which will facilitate a step-change in public engagement practice.

There is flexibility in the use of funds (with justification) – indicative items might be: time-buy-out; equipment purchase; buy-in of expertise; venue hire/refreshments; travel costs.

Projects should begin in November 2021 and be substantially complete by the end of July 2022. It is essential that all project spend is complete by 31 July 2022 (i.e. all Agresso processes completed). **The nature of this funding does not permit any extension beyond 31 July.**

The PERu team are happy to discuss outline proposals in advance of submission – please email us at peru@soton.ac.uk in the first instance (internal AND externally-led proposals). For schools-related projects, you can seek advice additionally from supo@soton.ac.uk, and via this [Guidebook](#) (external applicants: please email to request a copy).

Internal applicants are invited to find out more at an [Information Session \(via Teams\) on 21 July 2021](#). Come along to meet the PERu team and explore this opportunity - with time for Q&A and conversation

5. Reporting requirements

The reporting process will be light touch, consisting of:

- **interim progress report** by 31 March 2022
- **expenditure summary** in July 2022
- **final report** by 30 September 2022

We expect all project teams to share good practice and learning from their work via www.soton.ac.uk/per (case study or similar) and to participate in relevant PERu/PE Network activities and events.

6. Application process and timeline

[Info/Q&A Session](#) – 2pm Weds 21 July: Join this Teams session (for internal applicants) to find out more/ask questions.

Application deadline: Thursday 23 September 2021.

Please complete the 2021 Application form, via relevant link:

[Internal applicants](#) (sharepoint)

[External applicants](#) (website)

and email it to peru@soton.ac.uk.

NB. Doctoral Researchers are eligible and encouraged to make an application but must secure endorsement from their supervisor (via completion of Section H on the application form).

Award outcomes will be announced by **Thursday 14 October 2021**.

JJ/July 2021

Public Engagement with Research unit