



Public Health
England

Protecting and improving the nation's health

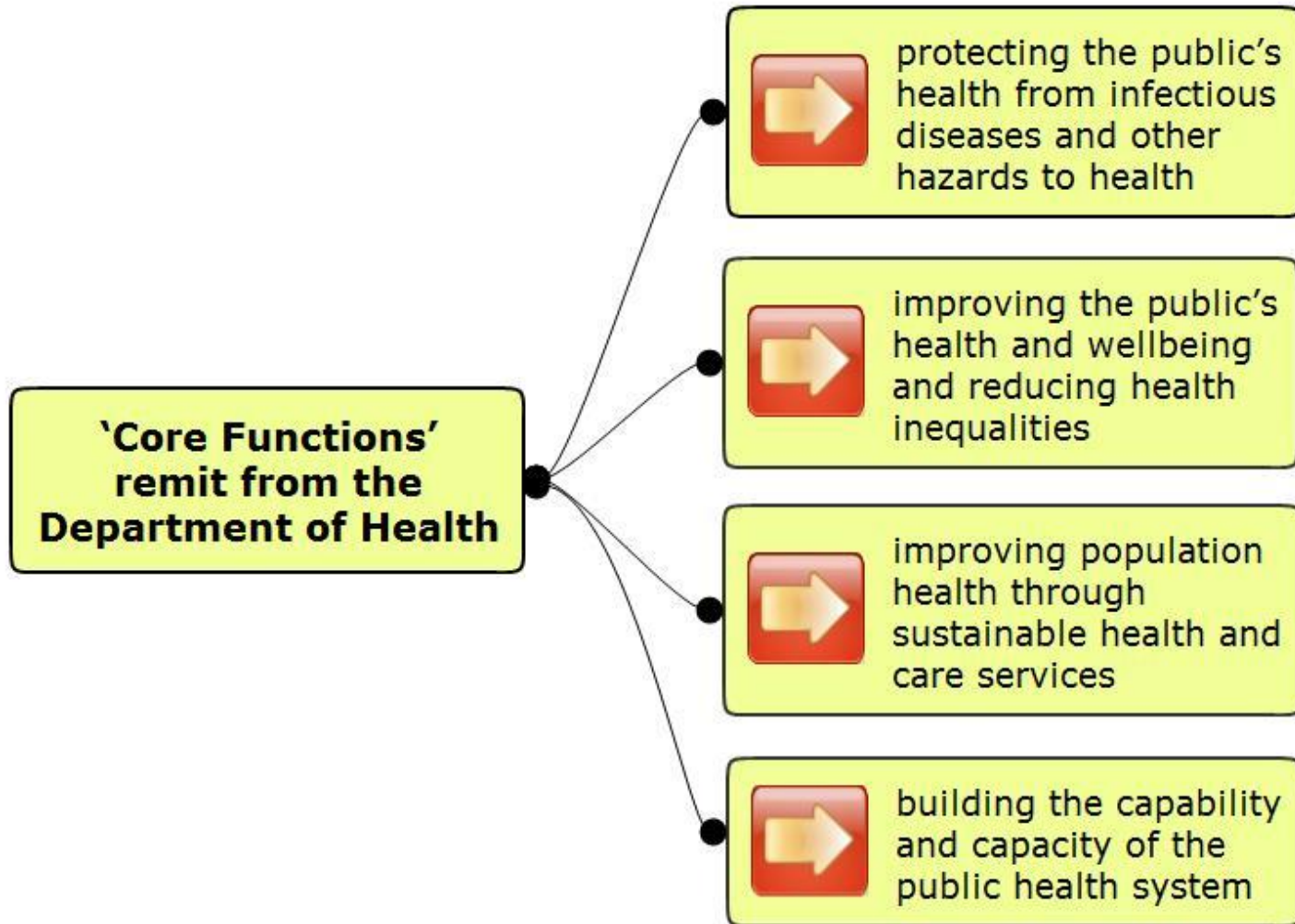
Public Health England (PHE): an overview and the role of the South East Centre

Sue Dewhirst, Public Health Manager, Health & Wellbeing, Public
Health England, South East Centre
February 2016

Public Health England

PHE exists to protect and improve the nation's health and wellbeing, and reduce health inequalities.

PHE: Four core functions



PHE - seven key priority areas



Tackling obesity



Reducing smoking



Reducing harmful drinking



Ensuring every child has the best start in life



Reducing dementia risk

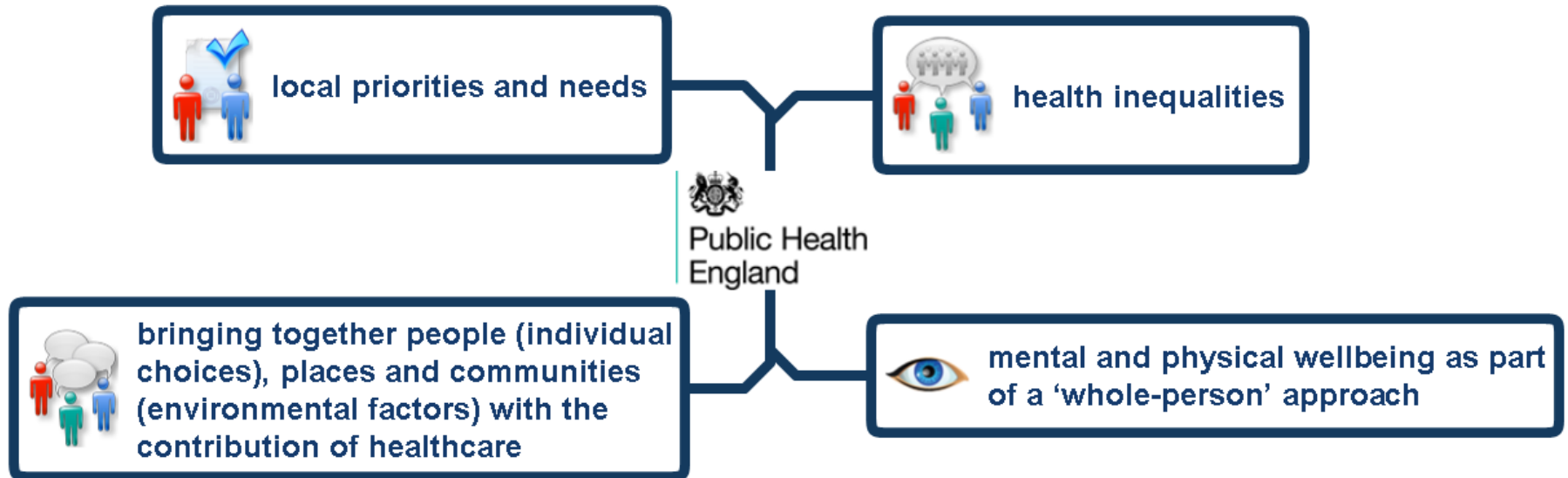


Tackling antimicrobial resistance



Reducing tuberculosis

PHE: Four underpinning themes

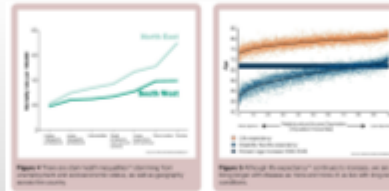


PHE: three key impacts

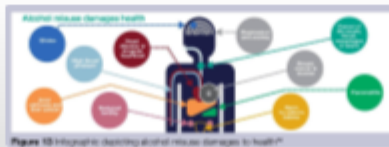
Key Impacts



encourage behaviour change

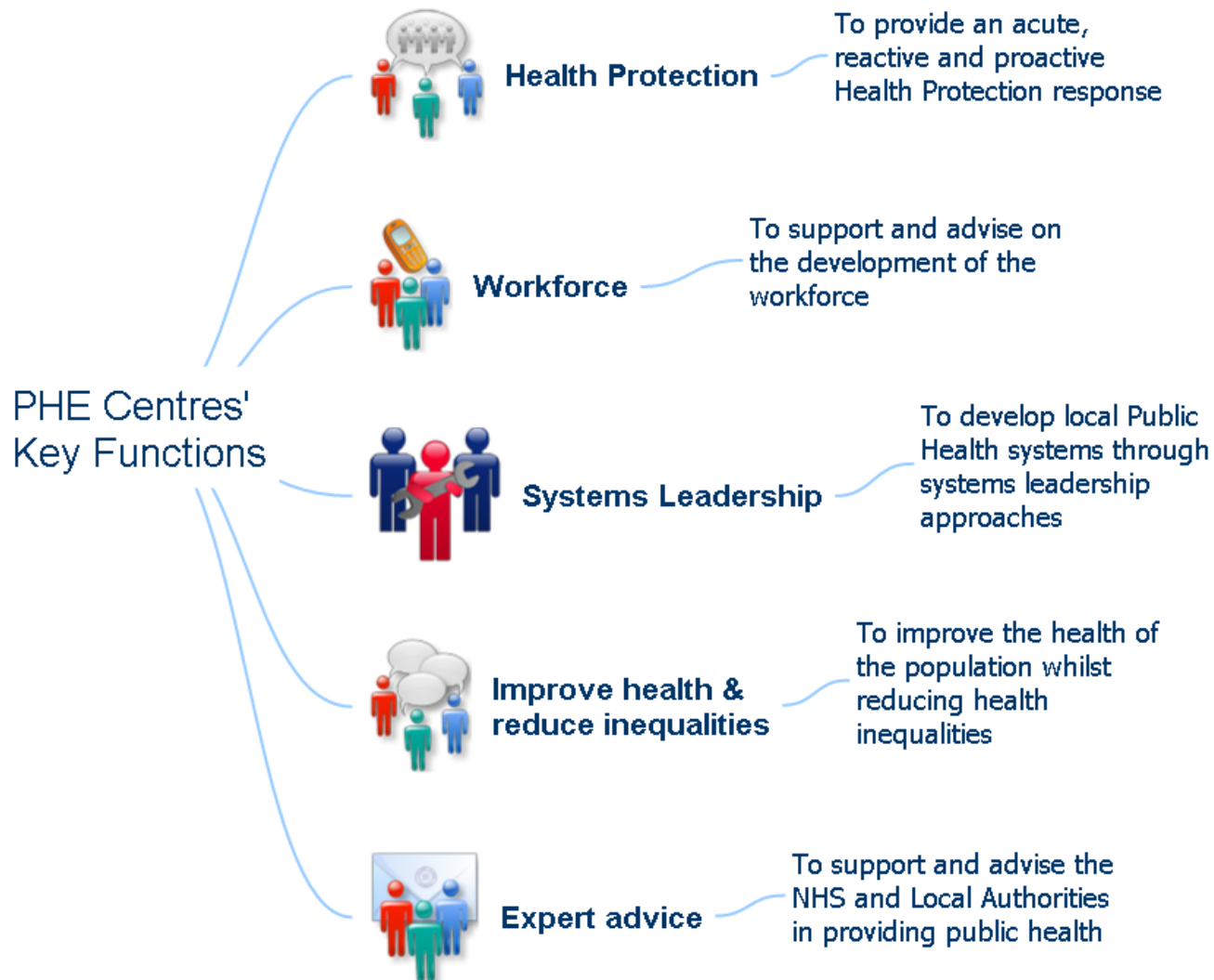


reduce avoidable mortality and address damaging trends in health inequalities



reduce the financial burden of ill-health on the NHS

What PHE Centres do



Our work promotes wellbeing and creates environments that enable individuals, families and communities to be informed, empowered, healthier and more productive.



Public Health
England

South East Centre

Protecting and improving the nation's health



Public Health England South East

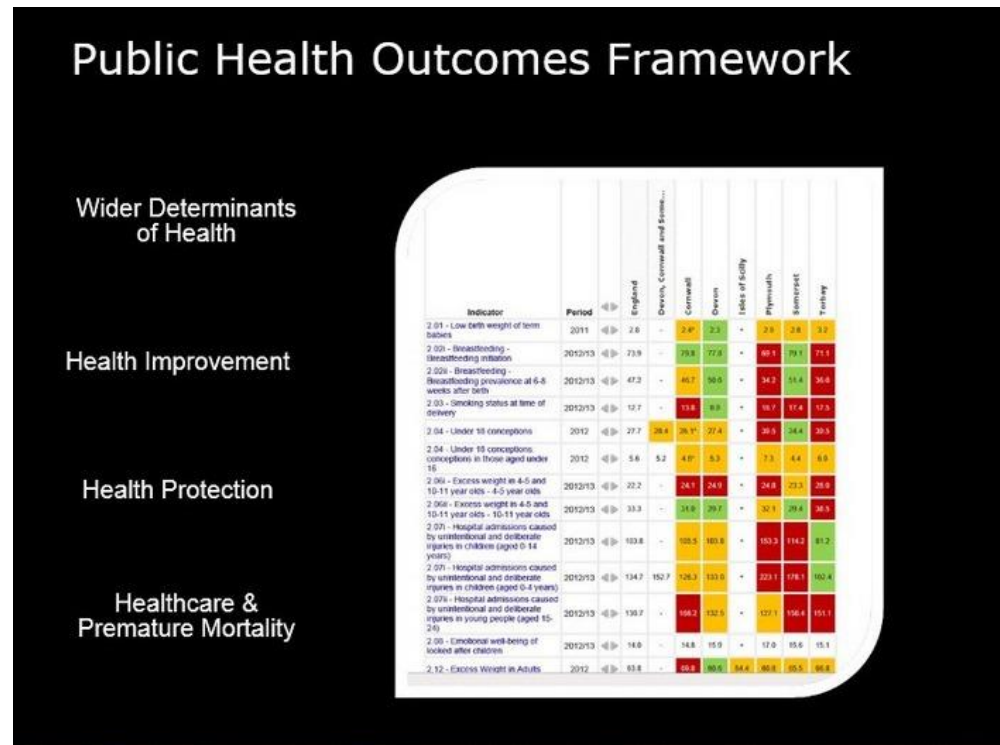


Public Health England South East

- A population of 8,614,573
- Local authorities: 7 county, 11 unitary and 63 district/borough
- 18 health and wellbeing boards
- 38 Clinical commissioning groups
- 5 local resilience forums
- 3 local education and training boards
- 3 academic health science networks
- Public health teams in universities

The 'Public Health Outcomes Framework'

PHE Centres work with intelligence colleagues to use the PHOF and other data sets to inform their knowledge, intelligence and understanding of the local public health system



PHE centre health and wellbeing teams

- Public Health England is a key part of the local public health system
- The PHE centre is the 'front door' to PHE for local stakeholders
- Each PHE centre health and wellbeing team workforce is unique
- Teams include professional public health staff up to consultants
- Work plans reflect the needs of the local system and national drivers
- PHE Centre health and wellbeing teams work to the same principles





Public Health
England

Protecting and improving the nation's health

Thank you

Sue.dewhirst@phe.gov.uk

February 2016